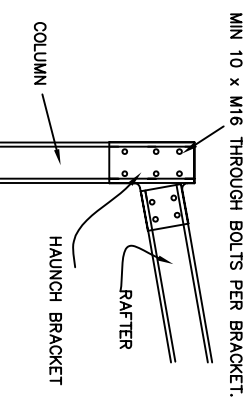


MIN 8 x M16 THROUGH BOLTS PER BRACKET.
DETAIL ①
 TYPICAL BOLTED CONNECTION FOR
 C250, C300 & C400 FRAMES

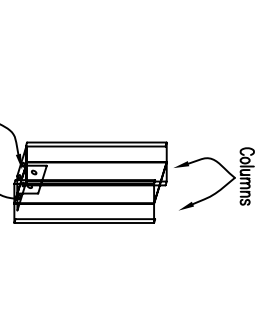
C250, C300 & C400 FRAME
 EMPLOY 8 x M16 THROUGH BOLTS
 PER BRACKET

C250, C300 & C400 FRAME
 ALL HAUNCH & APEX CONNECTION FASTENERS TO BE
 M16 x 30 4.6S min. OR M16 x 40 4.6S min. (BACK
 TO BACK FRAMES).

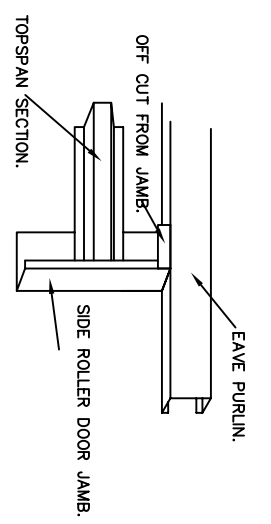


MIN 10 x M16 THROUGH BOLTS PER BRACKET.
DETAIL ②
 TYPICAL BOLTED CONNECTION FOR
 C250, C300 & C400 FRAMES.

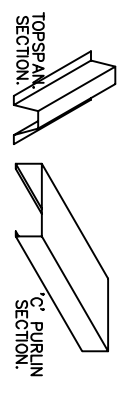
EMPLOY 6 M16 THROUGH
 BOLTS TO COLUMN,
 4 M16 THROUGH BOLTS TO RAFTER.



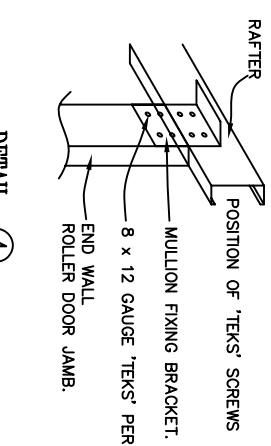
Columns
 Back-to-back Base Cleat Brackets
 with 2 M16 through bolts per bracket.
**DOUBLE COLUMN
 BASE CLEATS**



Columns
 OFF CUT FROM JAMB.
 SIDE ROLLER DOOR JAMB.
 TOPSPAN SECTION.
 'TEKS' SCREWS CONNECTIONS
SIDE ROLLER DOOR JAMB.

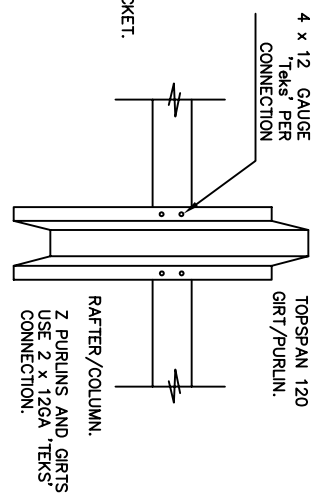


TOPSPAN SECTION
 C/PURLIN SECTION
**TYPICAL GIRTS, PURLINS
 AND ROLLERDOOR HEADERS.**

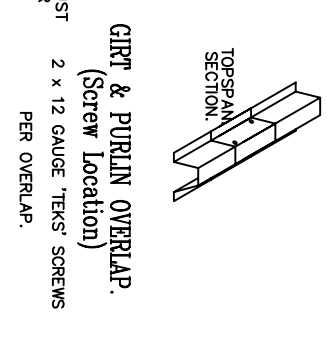


DETAIL ③
 MULLION FIXING ANGLE.

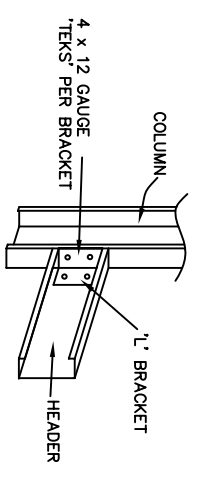
'Teks' Screwed or Bolted



4 x 12 GAUGE
 'TEKS' PER
 CONNECTION
 TOPSPAN 64
 GIRT/PURLIN.
 2 x 12 GAUGE
 'TEKS' PER
 CONNECTION.
 RAFTER/COLUMN.
 TOPSPAN 120
 GIRT/PURLIN.
 RAFTER/COLUMN.
 Z PURLINS AND GIRTS MUST
 USE 2 x 12GA 'TEKS' PER
 CONNECTION.

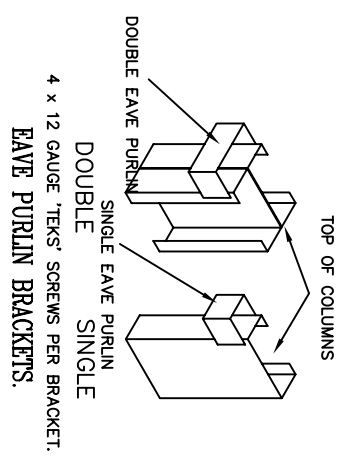


GIRT & PURLIN OVERLAP.
 (Screw Location)
 2 x 12 GAUGE 'TEKS' SCREWS
 PER OVERLAP.

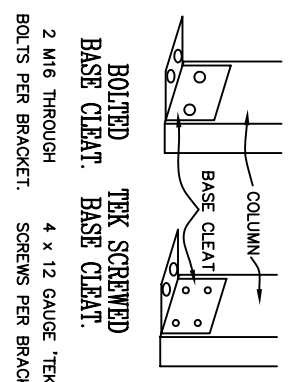


DETAIL ④
 ROLLER DOOR JAMB

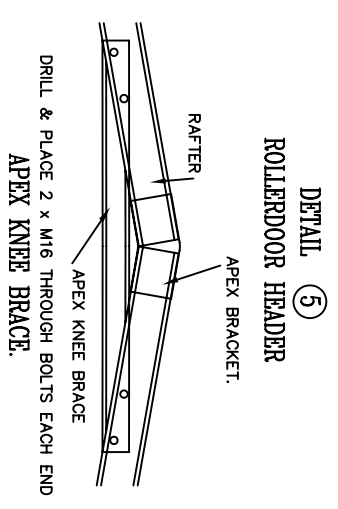
2 x 12 GAUGE
 'Teks' SCREWS PER CONNECTION



TOP OF COLUMNS
 DOUBLE EAVE PURLIN
 SINGLE EAVE PURLIN
 4 x 12 GAUGE 'TEKS' SCREWS PER BRACKET.
**DOUBLE
 EAVE PURLIN BRACKETS.**

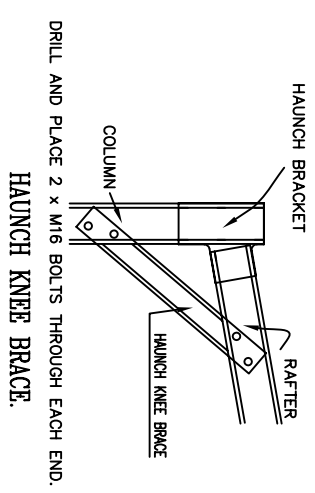


**BOLTED
 BASE CLEAT.** 2 M16 THROUGH
 BOLTS PER BRACKET.
**TEK SCREWED
 BASE CLEAT.** 4 x 12 GAUGE 'TEKS'
 SCREWS PER BRACKET.
 CUT OUT TO SUIT WALL GIRT.

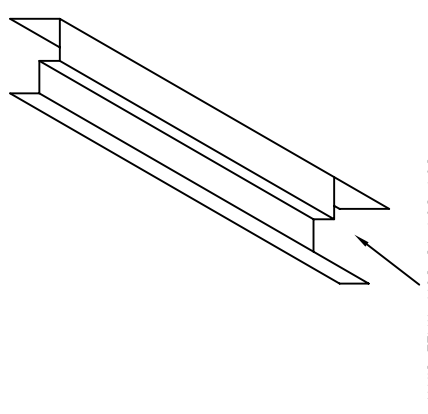


DETAIL ⑤
 ROLLERDOOR HEADER

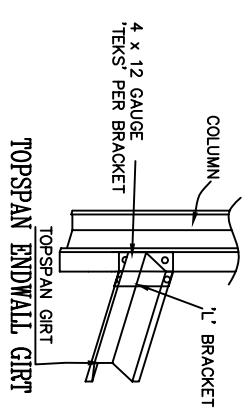
4 x 12 GAUGE
 'TEKS' PER GAUGE



HAUNCH BRACKET
 RAFTER
 HAUNCH KNEE BRACE
 COLUMN
 DRILL AND PLACE 2 x M16 THROUGH BOLTS EACH END.
HAUNCH KNEE BRACE.



CUT OUT TO SUIT WALL GIRT.



COLUMN
 L' BRACKET
 4 x 12 GAUGE
 'TEKS' PER BRACKET
TOPSPAN ENDWALL GIRT

CODES
 The design complies with the following codes and regulations:
 BS6399 (Inclusive), BS5950-5, BS5950-7, BS8103-1,
 The Building Regulations (UK) 1991, Approved Document A.

DESIGN CONDITIONS
 This design covers the following site conditions
 Region: Vb <29m/s
 Terrain Category: Country and Town, Hr < 6.5m
 Wind Velocity: V_e to 45m/s
 Ground Snow Loading (S_g): 1kPa (Max 0.7kPa Roof Snow Load (S_d)).
 Site altitude to be less than 250m, above mean sea level.

CLADDING
 Wall Cladding must be Stramit K-Panel,
 Monoclad 0.42, Monoclad 0.35 or Corro 0.42.
 (K-Panel must not be used in Reg. C areas)
 Roof Cladding Must be Stramit Monoclad 0.42,
 Corro 0.42 or Monoclad 0.35.

MATERIALS
 All cold formed sections are to conform too
 and comply with The Building Regulations (UK), 1991,
 and with BS5950-5, BS5950-7.

CONSTRUCTION
 The structure should be maintained in a stable condition
 during construction and due care taken to ensure that
 no part of the structure becomes overstressed.
 The Builder will be held responsible for any damage,
 caused to the structure during the construction process.

DIMENSIONS
 All dimensions are shown in millimetres, U.N.O.

FASTENERS
 'Tek' Screws and Bolts to be installed in accordance with the
 manufacturers instructions. Screws shall be no closer than
 50mm from each other and must be in a minimum of 25mm,
 from any edge. (Bracket to frame connection)

BRACING
 Exact Details of Strap and Fly Bracing requirements can be found on the
 Multibuild Specification Sheet.

ENGINEERING
 Engineering responsibility only covers those items both shown in these
 drawings and supplied by Hi-Tech Designs. Any alterations must be
 passed by a qualified structural engineer, and are not covered by Hi-Tech
 Designs unless in writing with an appropriate original blue ink
 signature.

UK ONLY

A B CONSULTING ENGINEERS
 STRUCTURAL AND CIVIL
 MIEAust. CPEng. (Regd. NPER - 3 Structural)
 Andrew Matukевич
 Practising Structural Engineer
 Signature: *Andrew Matukевич* Date: 14/8/02
 Registered in the Category of
 Structural

STEEL FRAME GARAGE
 C250, C300 & C400 FRAMES

PERSONAL ACCESS DOOR.
 HI-TECH DESIGNS PTY LTD
 PO BOX 252
 CAMDEN, NSW 2570
 Ph: 02 46 55 00 00
 © Copyright Hi-Tech Designs Pty Ltd
 DATE: August 2002
 SCALE: N.T.S.
 DWG NO. SHEET
 MBC250,C300,C400 5/5